

ROUND BLADE GATE VALVE

OVERVIEW

The Mazbeng RBG valve is designed to meet the most demanding applications when handling abrasive materials. The RBG handles dry material in gravity flow applications where positive material shut-off and dust-tight sealing is required. This valve is ideal for applications that require metering, it has 2 actuators: one of them for gross filling and the another one for fine filling obtaining an accurate filling.

Material Handled:

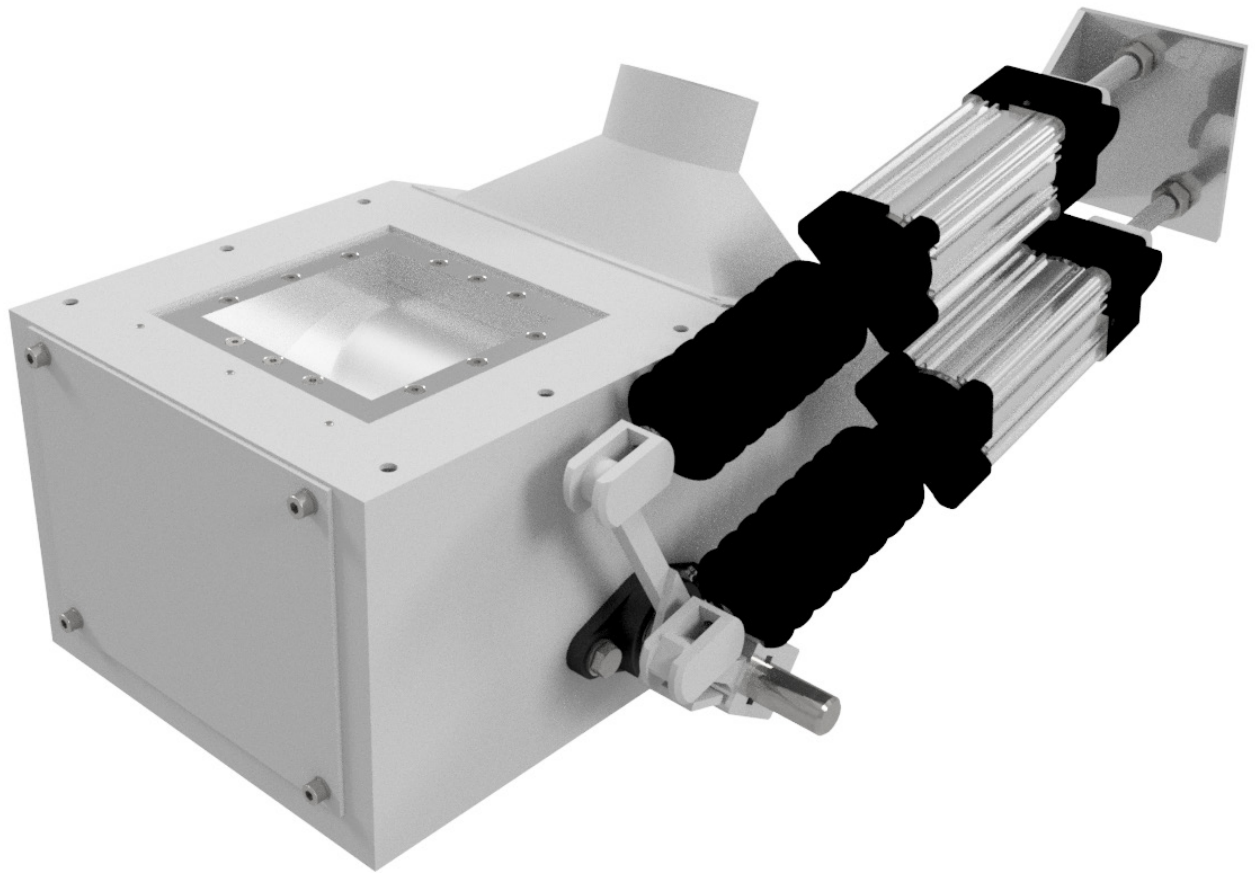


Powders



Granules

DIAGRAM



FEATURES

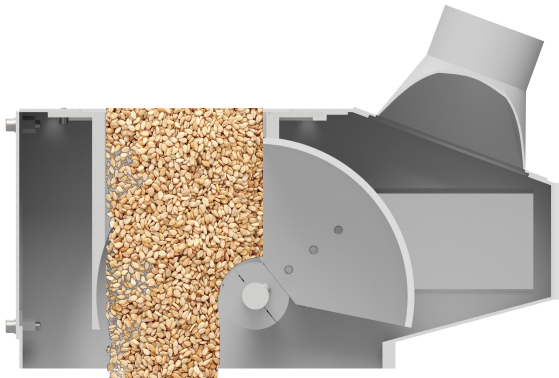
TECHNICAL DATA

Conveyance Type	Gravity flow only
Size	4 - 24 inches 100 - 610 mm
Flange Range	Standard flange Custom flanges are available
Body Frame Construction	Carbon Steel / Stainless Steel
Drive / Actuation	Double acting air cylinder, electric actuator, Hydraulic actuator
Position confirmation	Proximity switches
Arc Seal Construction	Mechanical seal with 0.2-0.8 mm of distance between the gate and the arc



For applications, photos, videos or a complete list of specifications and dimensional drawings visit:

WWW.MAZBENG.COM



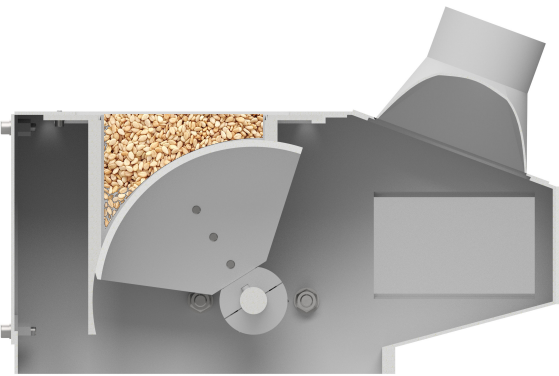
GROSS FILLING

One of the actuators opens the gate which can be adjustable between 75-100% opened. The proximity sensors confirms that the valve is opened.



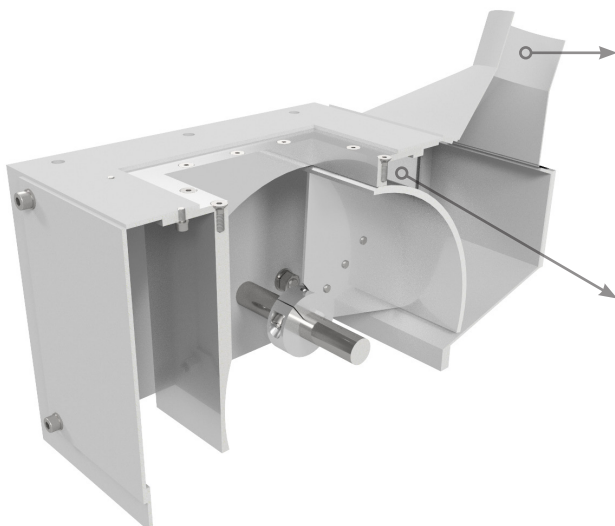
FINE FILLING

This valve was designed for metering, this is why there is a second actuator to adjust the position of the gate between 1-20% opened obtaining a more accurate filling.



ARC SEALING

There are no rubber seals for the dust-tight sealing which increase the availability of the valve. It has a separation about 0.2-0.8 mm (adjustable) between the gate and the arc which is enough to dust-tight even when is handling fine powder materials.



DUST EXTRACTION DUCT

The duct helps to extract all the dust that might be generated inside the valve. It can be connected to the vacuum extraction line with a hose.

CLEANING SCRAPER

The scraper helps to clean the gate removing all the material that could be stuck in the surface.