

## HANDBAG FAV02

The Handbag machine is a fully automatic system to place empty bags onto the filling spouts to fill and close them. In contrast to manual bag placing, they ensure the high efficiency of a packing machine. The placing process is consistent and reliable. Its simplify and optimized mechanical designed allows to install it in any place in the factory without any infrastructure modifications.

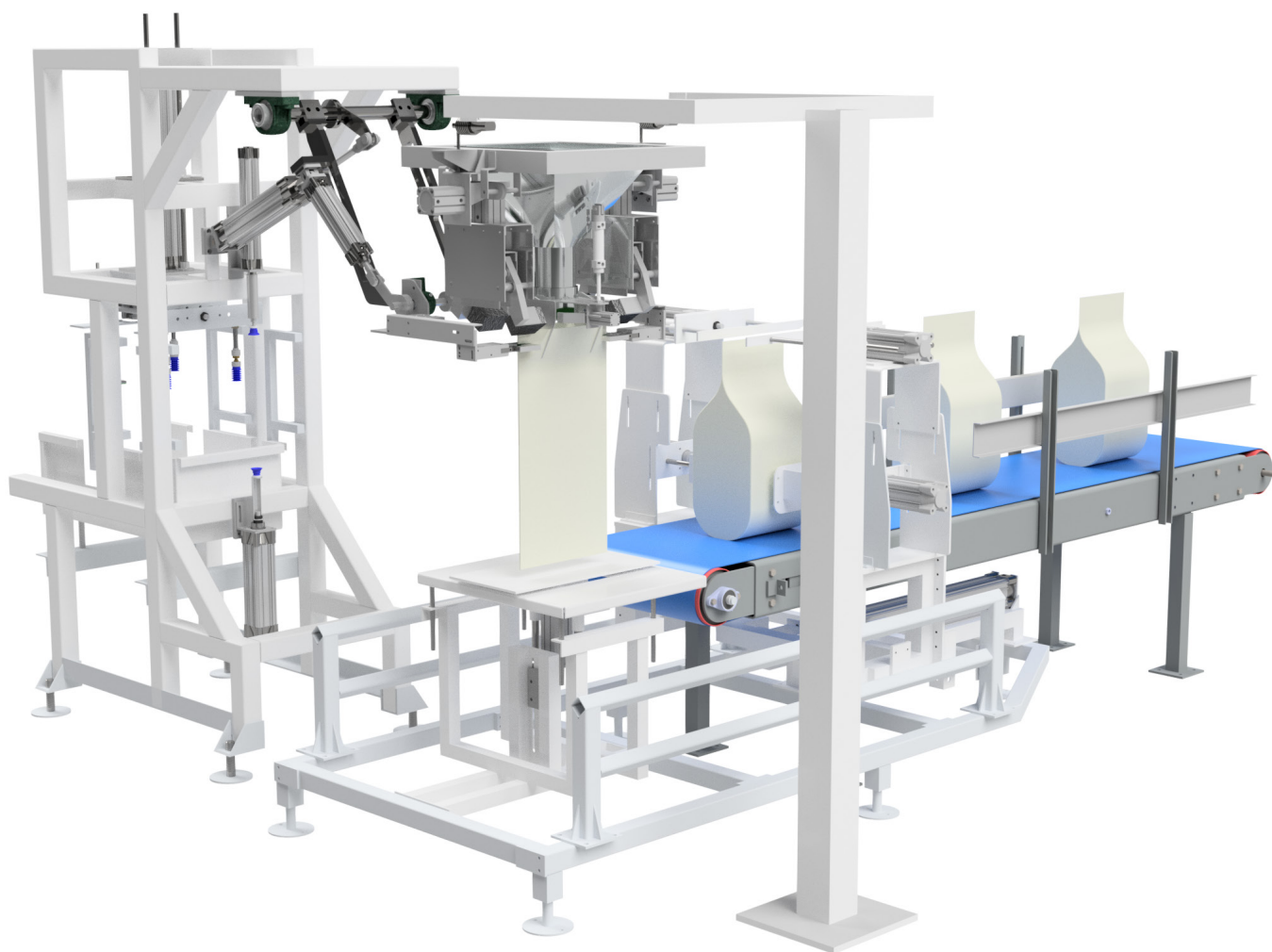
### Material Handled:



Powers



Granules



### TECHNICAL DATA

Nominal Output	5-15 bags (25 kg) / minute
Electrical desing	1x230V/N/PE, 50-60 Hz, 0.3 kVA
Required air pressure	5 bar
Air Consumption	0.5 m3/min
Bag size	25 - 50 kg
Bag type	Pasted open mouth, Pasted valve, Pinch Bottom, Block bottom, paper, polypropylene, plastic and more.



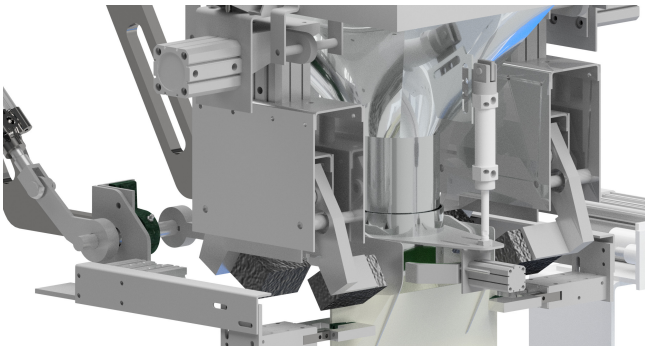
For applications, photos, videos or a complete list of specifications and dimensional drawings visit:

[WWW.MAZBENG.COM](http://WWW.MAZBENG.COM)



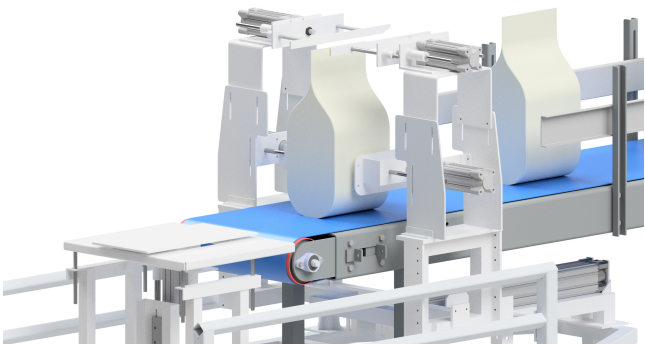
### RELIABLE VACUUM PAD

This pad has a thin film skirt and an special rib that help to adapts to changes in soft packaging and reduce the vaccum leakage by improving sealing effect that prevents the skirt from becoming caught. The guide attachment helps to avoid deformation of pad and deflection of workpiece during adsorption transfer are reduced.



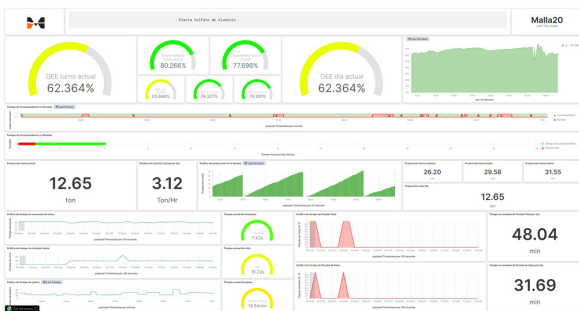
### AUTOMATED FILLING SPOUT

Once the bag is placed in the filling spout there are actuators that hold the empty bag to begin the filling process, this actuators also seal the open mouth of the bag to avoid that the generated dust because of the filling process escape to the environment protecting all the equipments. After the bag is full the actuators stretch the bag to make the mouth of the bag flat.



### AUTOMATED FULL BAG PLACER

After the bag is stretched in the filling spout the open mouth of the full bag needs to be flat to ensure a well sewing. This system has actuators to flattened the mouth of the full bag and then to place it in the automated sewing machine.



### OEE & PRODUCTION KPIs

Web&Mobile responsive dashboards to monitor in real time OEEs and production KPIs like downtimes, filling speed, production rate, machine speed, total production per day and per shift work.



### MAINTENANCE KPIs

Web&Mobile responsive dashboards to monitor in real time the condition of all the pneumatic and electrical actuators, vacuum pads, valves and Sensors. Machine learning to detect and prevent potential failures.