

DOSMACH FAV01

The Handbag machine is a fully automatic system to place empty bags onto the filling spouts to fill and close them. In contrast to manual bag placing, they ensure the high efficiency of a packing machine. The placing process is consistent and reliable. Its simplify and optimized mechanical designed allows to install it in any place in the factory without any infrastructure modifications.

Containers:



Drums



Granules



TECHNICAL DATA

Nominal Output	50-90 Drums (220 L) / Hour
Electrical desing	1x230V/N/PE, 50-60 Hz, 0.3 kVA
Required air pressure	5 bar
Air Consumption	0.5 m3/min
Containers	Drums (220 Liters) / IBCs (800 & 1,000 Liters)
Filling technology	Electromagnetic Flowmeters - 0.3-0.5% accurate



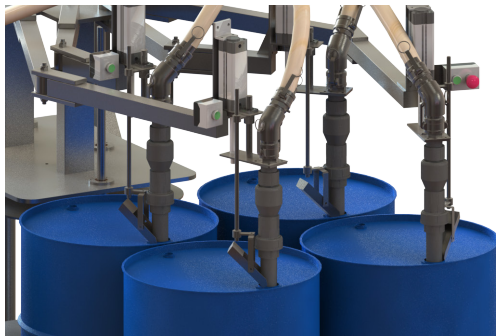
For applications, photos, videos or a complete list of specifications and dimensional drawings visit:

WWW.MAZBENG.COM



ELECTROMAGNETIC FLOWMETERS

There are 4 electromagnetic flowmeters for each filler to ensure an accurated filling volume in each container. These flowmeters have not mobile parts so maintenance is only to clean the piping with water, they don't need mechanical intervention or adjustment. We recommend to calibrate these instruments once per year.



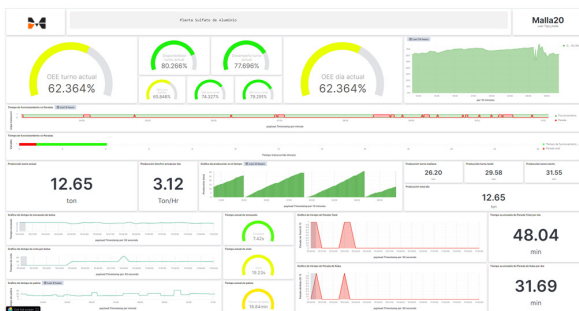
MULTIPLE FILLERS

There are 4 arms that hold the filler, each arm also has a pneumatic actuator to place the filler inside the container. The operator has to place manually the filler to align with each container's hole. This placing process takes around 8 seconds but as soon as the first filler is in its filling position, the filling process starts.



MULTIPLE FILLING POSITIONS

There is a rotational pneumatic actuator to rotate all the fillers to another filling position. This is helpful when there is not enough space to install a roller conveyor. After you finished the filling of one pallet with 4 drums you can rotate to the another filling position and do not to wait for another operator that will take away the full drums and bring others empty containers increasing significantly the productivity.



OEE & PRODUCTION KPIs

Web&Mobile responsive dashboards to monitor in real time OEEs and production KPIs like downtimes, filling speed, production rate, machine speed, total production per day and per shift work.



MAINTENANCE KPIs

Web&Mobile responsive dashboards to monitor in real time the condition of all the pneumatic and electrical actuators, vacuum pads, valves and Sensors. Machine learning to detect and prevent potential failures.